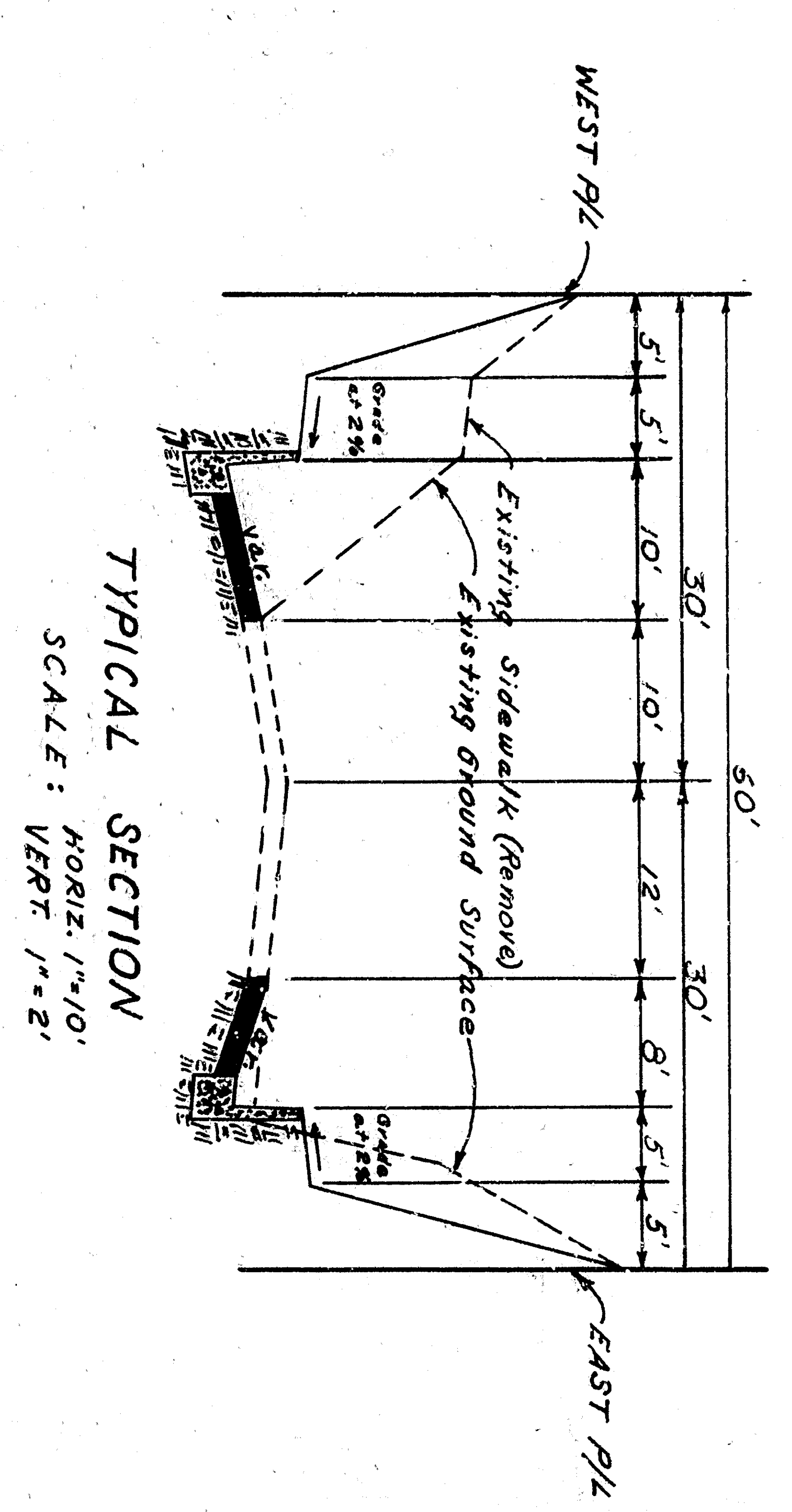
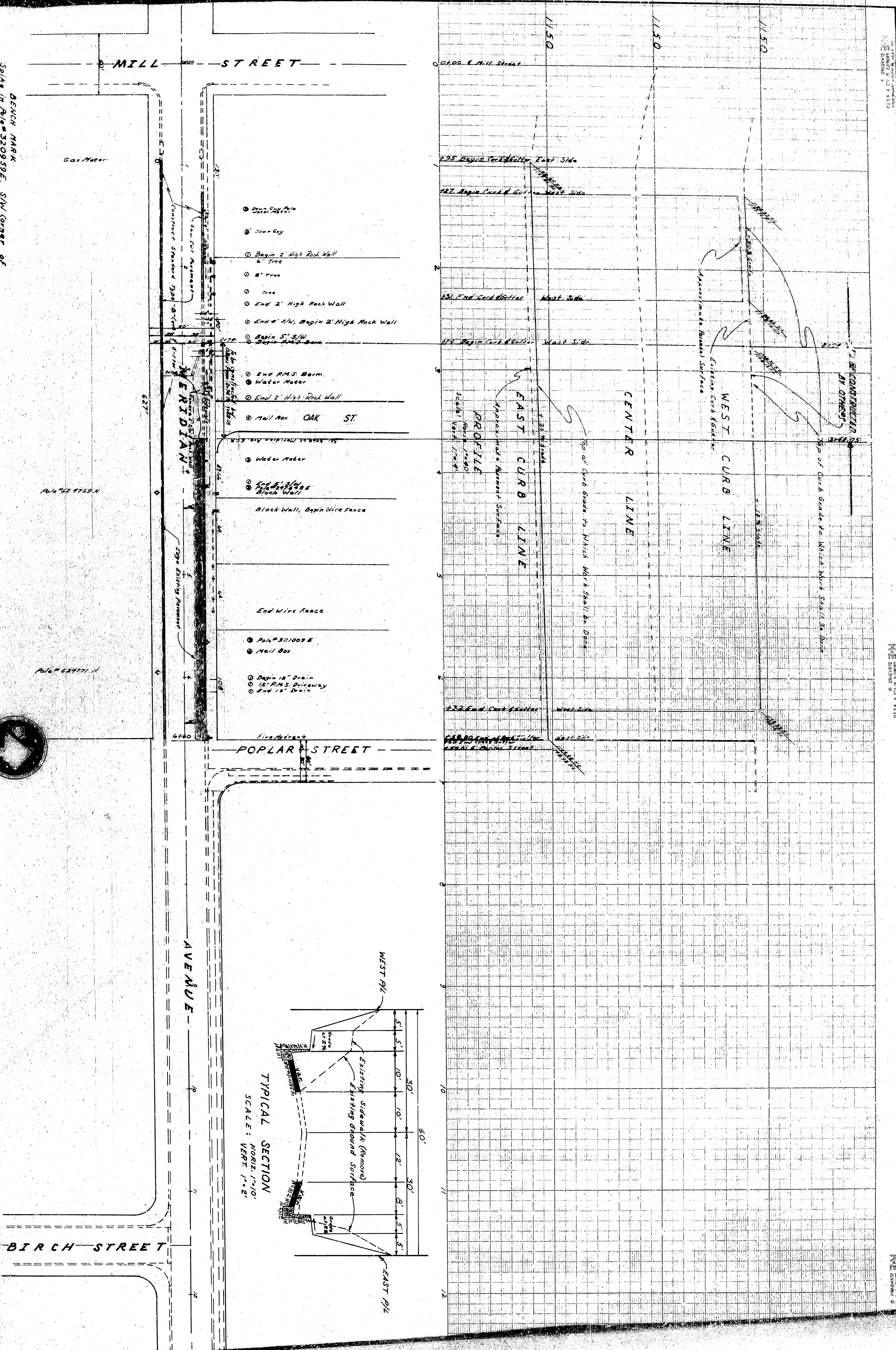


BENCH MARK  
 Spike in Pole #320939E, SW corner of  
 Mill Street & Meridian Avenue.  
 Elev. 1148.49 M.S.L.

PLAN  
 Scale: 1"=40'

APPROVED  
 [Signature]  
 REGISTERED CIVIL ENGINEER NO. 18570  
 DRAWING NO. 18570  
 SHEET 2 OF 2  
 CHECKED BY [Signature]  
 DESIGNED BY [Signature]

DEPARTMENT OF ENGINEERING  
 CITY OF SAN BERNARDINO  
 CURB, GUTTER & PAVING  
 MERIDIAN AVENUE  
 MILL STREET TO BIRCH STREET



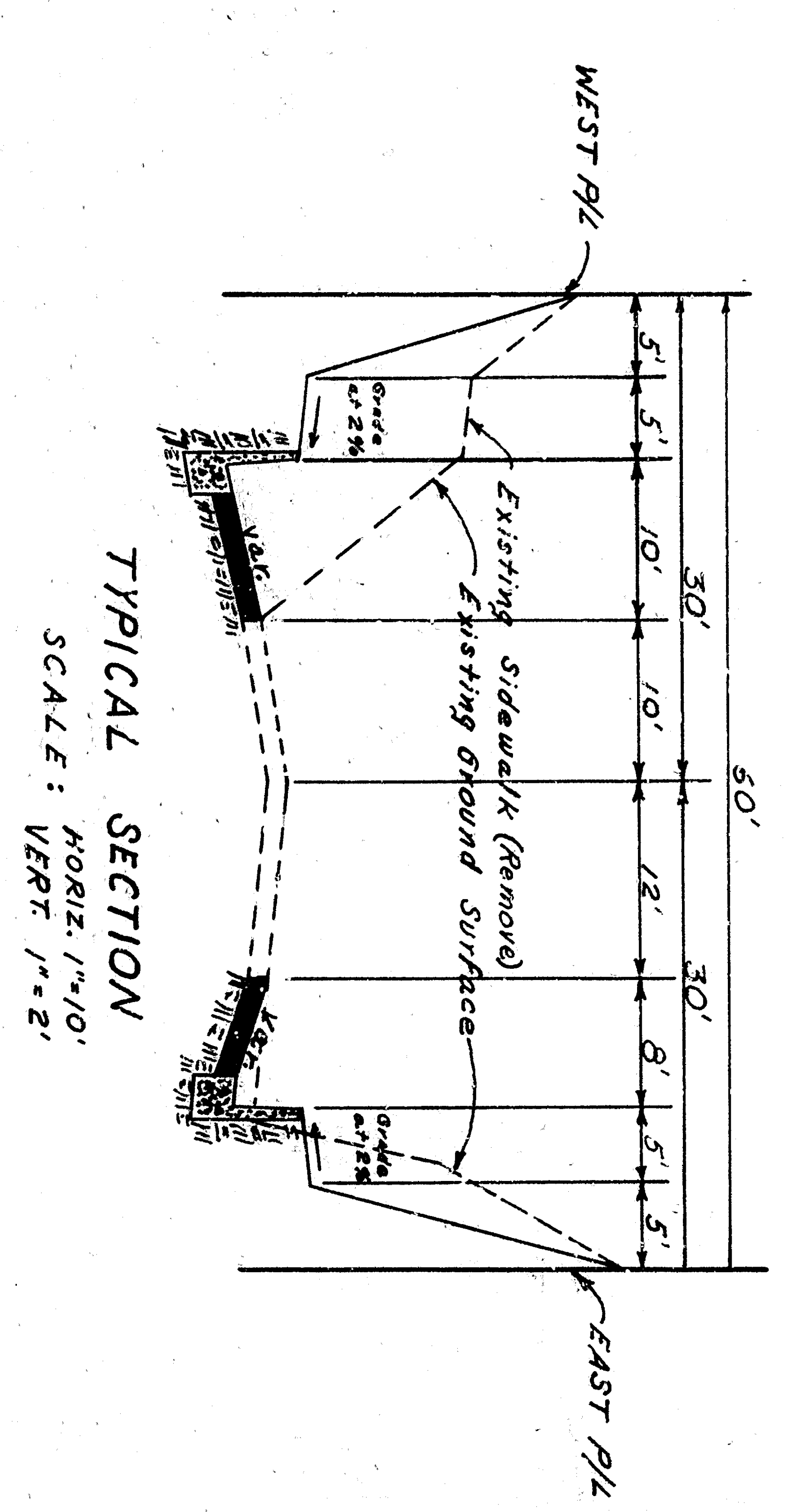
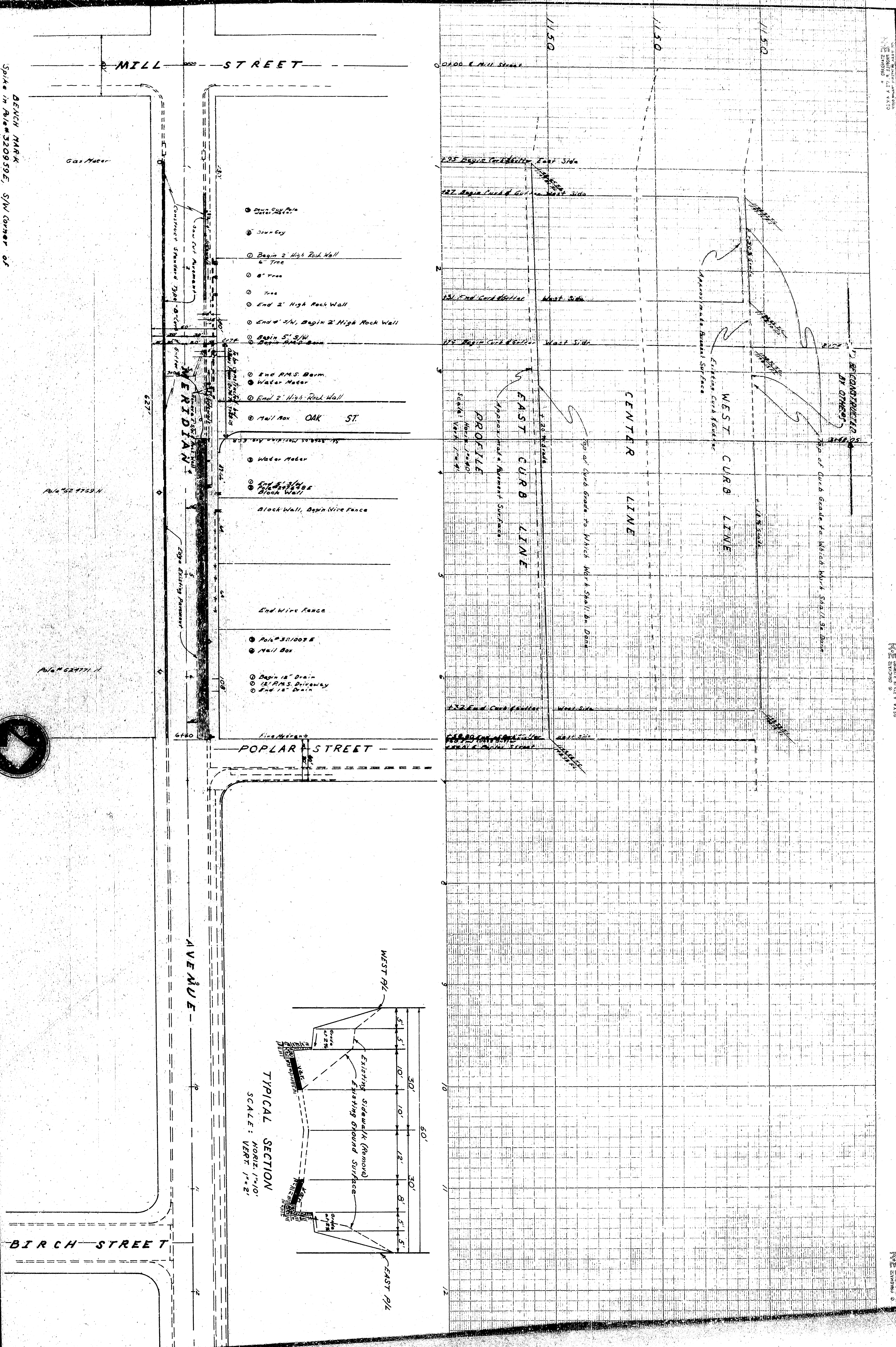
BENCH MARK  
 Spike in Pole #320939E, SW corner of  
 Mill Street & Meridian Avenue.  
 Elev. 1148.49 M.S.L.

PLAN  
 Scale: 1" = 40'

APPROVED  
 J. J. ...  
 REGISTERED CIVIL ENGINEER NO. 18570

CHECKED BY  
 D. ...  
 SHEET 2 OF 2

DEPARTMENT OF ENGINEERING  
 CITY OF SAN BERNARDINO  
 CURB, GUTTER & PAVING  
 MERIDIAN AVENUE  
 MILL STREET TO BIRCH STREET



Vertical text on the right edge of the drawing, including project details and scale information.